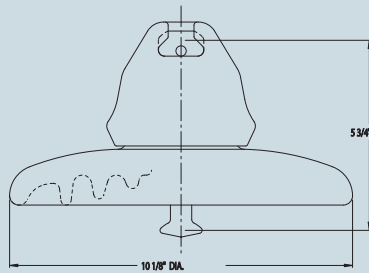


# T&D Insulators

## Suspension Insulators

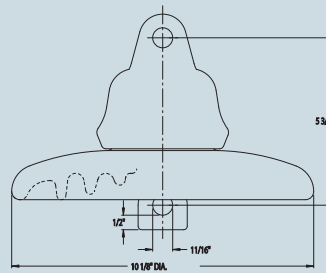
### Steel Hardware

#### Ball-Socket



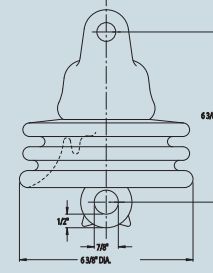
Type 81022

#### Clevis Type



Type 81012

#### Clevis Type



Type 84166

#### Mechanical & Electrical Characteristics

PPC Insulators Catalog Number	81022	81012	84166
ANSI Technical Reference Number	52-3	52-4	N/A
<b>Dimensions</b>			
Leakage Distance (in)/(mm)	11 1/2" 292.10 mm	11 1/2" 292.10 mm	10" 254.00 mm
Dry Arcing Distance (in)/(mm)	7 3/4" 196.85 mm	7 3/4" 196.85 mm	6" 152.40 mm
Height (in)/(mm)	5 3/4" 146.05 mm	5 3/4" 146.05 mm	6 3/8" 161.93 mm
Diameter (in)/(mm)	10 1/8" 257.18 mm	10 1/8" 257.18 mm	6 3/8" 161.93 mm
Diameter of Clevis Ring (in)/(mm)	N/A	1 1/8" 26.99 mm	1 1/8" 26.99 mm
<b>Mechanical Values</b>			
ANSI M & E Category	15000 lbs.	15000 lbs.	N/A
Comb. M & E Strength	20000 lbs.	20000 lbs.	10000 lbs.
Mechanical Impact Strength	55 inch lbs.	55 inch lbs.	50 inch lbs.
Routine Proof Test	10000 lbs.	10000 lbs.	5000 lbs.
Time Load Test	13200 lbs.	13200 lbs.	6000 lbs.
<b>Electrical Values</b>			
Low Frequency Flashover Dry	80 kV	80 kV	75 kV
Low Frequency Flashover Wet	50 kV	50 kV	40 kV
Impulse Flashover Positive	125 kV	125 kV	115 kV
Impulse Flashover Negative	130 kV	130 kV	115 kV
Low Frequency Puncture Voltage	110 kV	110 kV	90 kV
<b>Radio Influence Low Frequency Test Voltage Data</b>			
Test Voltage, Rms to Ground, KV	10 kV	10 kV	7.5 kV
Maximum RIV at 1000 kHz - V	50	50	50
<b>Weight</b>			
Maximum Net Weight	11 lbs.	11.8 lbs.	6.0 lbs.
Packaged Weight Per Unit	12.5 lbs.	13.3 lbs.	6.75 lbs.
<b>Packaging</b>			
Standard Packaging Quantity	6	6	8
<b>Insulator Coatings</b>			
Standard Glaze "Skyline" ANSI-70, Munsell 5 BG 7.0/D.4	Standard	Standard	Standard

Special Glaze Requirement: Upon Request

<sup>1</sup> REA Accepted